

AUCTION DATE  
15TH AUGUST 2024

## ONLINE AUCTION

- > **GUIDE PRICE : £100,000**
- > HIGH QUALITY OFFICE SPACE LOCATED IN GLASGOW CITY CENTRE
- > POTENTIAL FOR RESIDENTIAL CONVERSION (SUBJECT TO PLANNING CONSENT)
- > NET INTERNAL AREA:-**154.50 SQ M (1,663 SQ FT)**

**FOR SALE**

**SUITE 6.1, ATLANTIC CHAMBERS, 45 HOPE STREET, GLASGOW, G2 6AE**

**CONTACT:** Calvin Molinari BSc (Hons), [c.molinari@shepherd.co.uk](mailto:c.molinari@shepherd.co.uk), 0141 331 2807, [www.shepherd.co.uk](http://www.shepherd.co.uk) | [www.shepherd.co.uk/commercial-auctions](http://www.shepherd.co.uk/commercial-auctions)



**LOCATION**

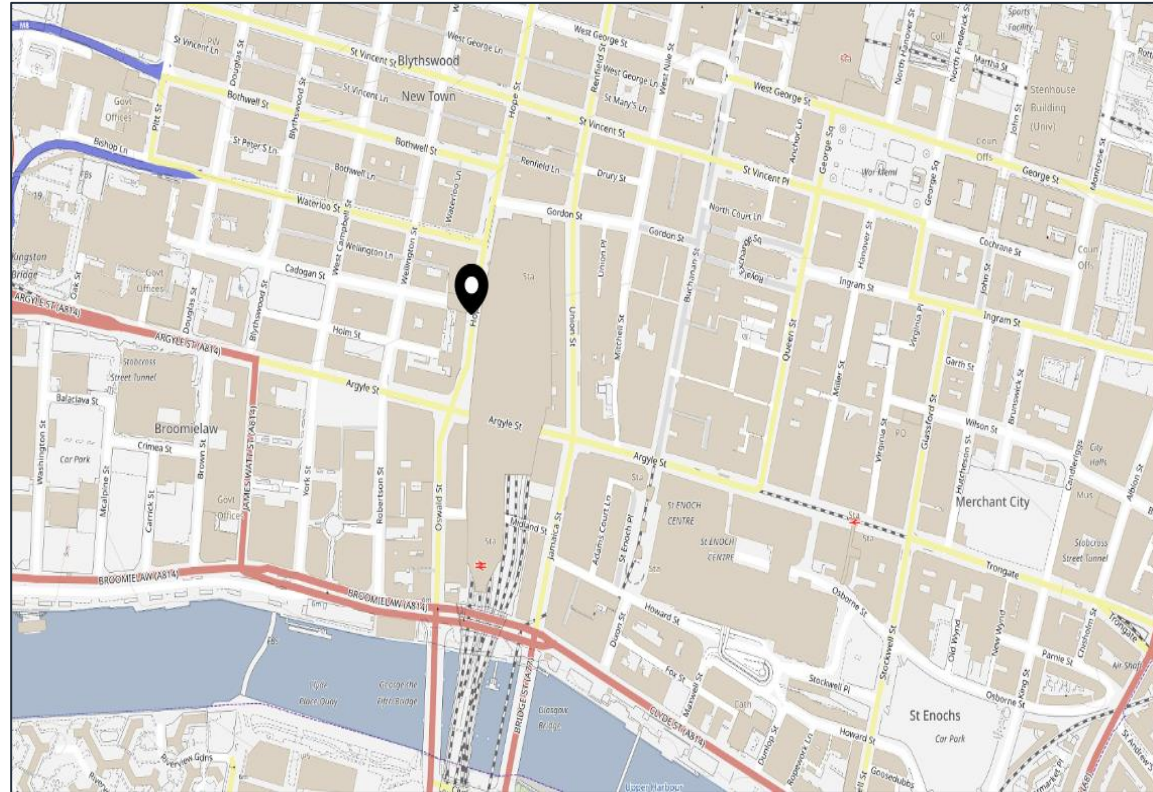
Atlantic Chambers is located in the heart of Glasgow City Centre. The property is located on the west side of Hope street opposite Glasgow Central Railway Station.

The property is exceedingly well placed for those travelling from outwith the city centre with Oswald Street and Mitchell Street carparks being located within a short walk of the property. Glasgow Queen Street and Glasgow Central Train Station are also located nearby. There is also a large amount of on-street parking located on Cadogan Street and Wellington Street. The property also benefits from an additional entrance on Cadogan Street.

The property has a wide range of amenities including supermarkets, bars, restaurants, convenience stores situated within the surrounding area of the property as well as being located within walking distance of Buchanan Street, Glasgow's primary street for high-end retail and fashion.

**DESCRIPTION**

The sixth floor, which is orientated east, offers a high-quality self-contained office accommodation. The suite itself can be accessed through an entrance which leads into a self-contained, open planned working area which has recently been fully refurbished. It also has one large meeting room/boardroom, a staff break out area, kitchen and toilet facilities located within the premises. The building also has 24-hour access as well as a secured door entry



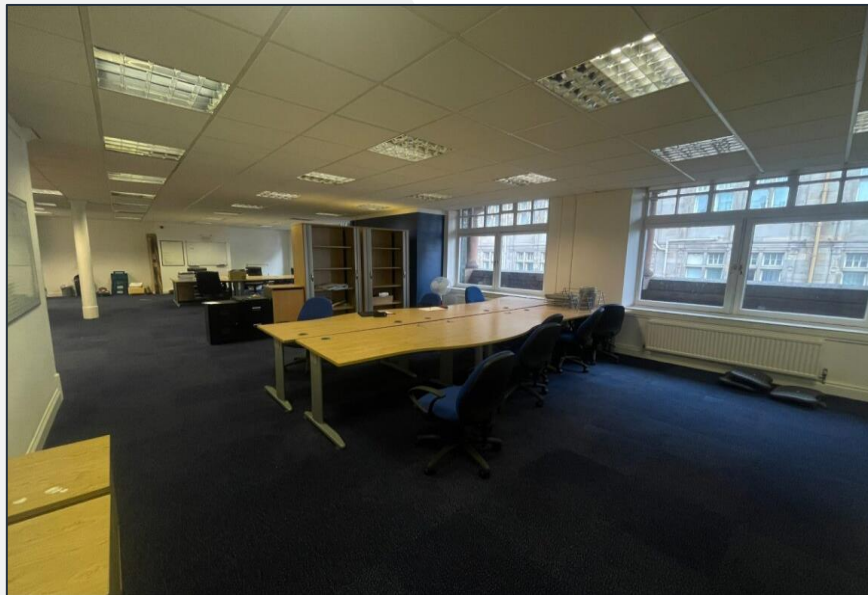
**ACCOMMODATION**

The below floor areas have been calculated on a Net Internal Floor Area Basis in accordance with the RICS Code of Measuring Practice.

| Accommodation | SQM    | SQFT  |
|---------------|--------|-------|
| Total         | 154.50 | 1,663 |

**PLANNING**

The subjects are assumed to be permitted as Class 4 Non-Residential Institutions. However, the site would be suitable for a potential development or conversion. Interested parties should make their own enquiries to the local planning authority.

**GUIDE PRICE**

The subjects are being offered on a freehold basis at a guide price of £100,000

**RATING**

The premises are presently entered in the valuation with a Rateable value of £21,250.

**ENERGY PERFORMANCE CERTIFICATE**

The premises have an Energy Performance Rating of 'F'.

**FOR SALE BY UNCONDITIONAL ONLINE AUCTION**

[www.shepherd.co.uk/commercial-auctions](http://www.shepherd.co.uk/commercial-auctions)

Buyers will be required to pre-register prior to approval of their bid.

**DEPOSIT**

At the end of the auction, if the reserve price has been met, a 10% deposit will be payable.

**RESERVE PRICE**

The reserve price is the minimum price for which the property can be sold and is confidential between the auctioneer and the vendor and cannot be disclosed.

If the reserve price isn't met, the property will remain unsold. You can contact our team and at this point you'll be able to make an offer which will be referred to the sellers for their consideration

**GUIDE PRICE**

Properties advertised with a guide price is within 10% above or below the reserve price when a single figure is stated.

If the guide price is a bracket figure, the reserve price cannot exceed the top end of the bracket price.

**BUYER FEES**

The buyer's fee is 2% plus VAT subject to a minimum of £2,000 plus VAT.

**LEGAL COSTS**

Each party shall be responsible for their own legal costs associated with the transaction with the ingoing occupier being responsible for any LBTT, registration dues etc.

**LEGAL PACK**

The legal pack is available to view online.

**VAT**

See legal pack.

**CONTACT DETAILS**Local Office Contact

Calvin Molinari BSc (Hons)

2nd Floor, Afton House,

26 West Nile Street,

Glasgow, G1 2PF

Tel: 0141 331 2807

[c.molinari@shepherd.co.uk](mailto:c.molinari@shepherd.co.uk)



**For further information or viewing arrangements please contact the sole agents:**

**Shepherd Chartered Surveyors** 2nd Floor, Afton House, 26 West Nile Street, Glasgow, G1 2PF

**Calvin Molinari BSc (Hons) MRICS** [c.molinari@shepherd.co.uk](mailto:c.molinari@shepherd.co.uk)

0141 331 2807

[www.shepherd.co.uk](http://www.shepherd.co.uk)

J & E Shepherd for themselves and for the vendors or lessors of this property whose agents they are, give notice that: (i) the particulars and plan are set out as a general outline for the guidance of intending purchasers or lessees, and do not constitute, nor constitute part of, an offer or contract (ii) all descriptions, dimensions, references to condition and necessary permissions for use and occupation, and other details are given in good faith and are believed to be correct at the date of first issue but any intending purchasers or tenants should not rely on them as statements or representations of fact but must satisfy themselves by inspection or otherwise as to the correctness of each of them; (iii) no person in the employment of J & E Shepherd has any authority to make or give any representation or warranty whatever in relation to this property; (iv) all prices and rentals are quoted exclusive of VAT unless otherwise stated. Prospective purchasers/lessees must satisfy themselves independently as to the incidence of VAT in respect of any transaction. We comply with the Money Laundering, Terrorist Financing and Transfer of Fund Regulations 2017. **PUBLICATION: JULY 2024**