

## LOWER GROUND FLOOR OFFICE

- > LOCATED IN EDINBURGH'S PRESTIGIOUS WEST END BUSINESS DISTRICT
- > **QUOTING RENT OF £22.00 PSF**
- > SIZES AVAILABLE FROM 360 SQFT – 922 SQFT
- > LIFT ACCESS & RECEPTION AREA FOR VISITORS
- > CLOSE PROXIMITY TO MAJOR TRANSPORT LINKS
- > CATEGORY B LISTED BUILDING
- > THREE WELL-PROPORTIONED ROOMS
- > AVAILABLE ON ROOM-BY-ROOM BASIS OR AS A WHOLE

**TO LET**

### 22 DRUMSHEUGH GARDENS, EDINBURGH, EH3 7RN

**CONTACT:** Emily Anderson, [emily.anderson@shepherd.co.uk](mailto:emily.anderson@shepherd.co.uk), 0131 225 1234 [www.shepherd.co.uk](http://www.shepherd.co.uk)  
Hannah Barnett, [hannah.barnett@shepherd.co.uk](mailto:hannah.barnett@shepherd.co.uk), 0131 225 1234 [www.shepherd.co.uk](http://www.shepherd.co.uk)



### LOCATION

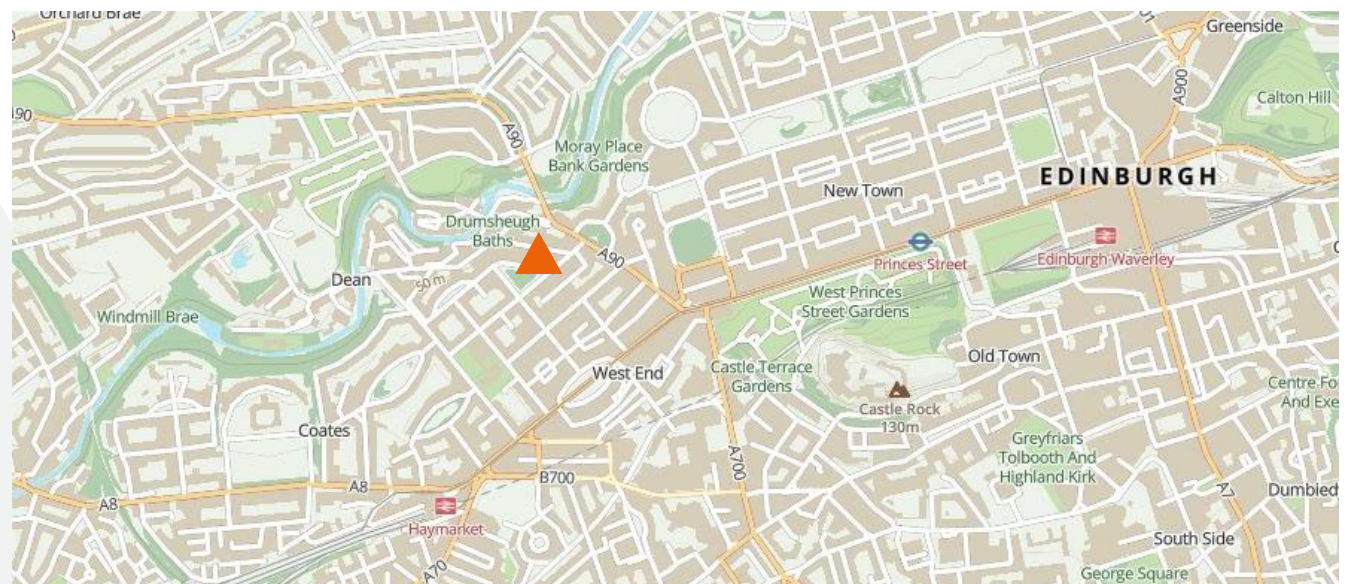
The subjects are located on the north side of Drumsheugh Gardens within Edinburgh's prestigious West End business district. This location is easily accessible with a variety of prominent public transport links in close proximity, including major bus routes, Shandwick Place tram halt & Haymarket Railway Station. Drumsheugh Gardens also acts as a vehicular & pedestrian thoroughfare linking Randolph Crescent with Palmerston Place. There are several nearby amenities within the area. The neighbouring occupiers within the building include Cormack Wealth, Fairfield RE Investment Services, AMS LTD & Physis Scotland.

### DESCRIPTION

The premises comprises modern Class 4 office space arranged over three spacious rooms on the lower ground floor of a traditional category B listed, 4-storey & basement corner terraced townhouse. Internally the accommodation has been refurbished to a high standard throughout. The lower ground floor comprises well-proportioned cellular office rooms & W.C. facilities. The property benefits from a lift accessing all floors, original corning, a feature staircase & an attractive entrance reception. There is also direct access via paved stairs into the lower ground suite from Drumsheugh Gardens. The floor can be let room by room or as one.

### LEASE TERMS

The subjects are being offered at £22.00 per sqft on a full repairing and insuring basis for a term to be agreed incorporating regular rent reviews. No VAT included.



**For further information or viewing arrangements please contact the sole agents:**

**Shepherd Chartered Surveyors** 12 Atholl Crescent, Edinburgh, EH3 8HA. Tel: 0131 225 1234

Emily Anderson [emily.anderson@shepherd.co.uk](mailto:emily.anderson@shepherd.co.uk) & Hannah Barnett [hannah.barnett@shepherd.co.uk](mailto:hannah.barnett@shepherd.co.uk)

[www.shepherd.co.uk](http://www.shepherd.co.uk)



J & E Shepherd for themselves and for the vendors or lessors of this property whose agents they are, give notice that: (i) the particulars and plan are set out as a general outline for the guidance of intending purchasers or lessees, and do not constitute, nor constitute part of, an offer or contract (ii) all descriptions, dimensions, references to condition and necessary permissions for use and occupation, and other details are given in good faith and are believed to be correct at the date of first issue but any intending purchasers or tenants should not rely on them as statements or representations of fact but must satisfy themselves by inspection or otherwise as to the correctness of each of them; (iii) no person in the employment of J & E Shepherd has any authority to make or give any representation or warranty whatever in relation to this property; (iv) all prices and rentals are quoted exclusive of VAT unless otherwise stated. Prospective purchasers/lessees must satisfy themselves independently as to the incidence of VAT in respect of any transaction. We comply with the Money Laundering, Terrorist Financing and Transfer of Fund Regulations 2017.

ACCOMMODATION	SqM	SqFt
Lower Ground Floor	85.70	922
<b>TOTAL</b>	<b>85.70</b>	<b>922</b>

The areas above have been calculated on a net internal area basis in accordance with the RICS Property Measurement Professional Statement (Second Edition, January 2018) incorporating the International Property Measurement Standards.

### RATEABLE VALUE

The subjects are entered in the current Valuation Roll at a rateable value of £12,500 which will result in net annual rates payable of £6,225.

Please note that a new owner or occupier of a commercial property has the right to appeal this rateable value within 6 months of the beginning of the tenancy.

### VAT

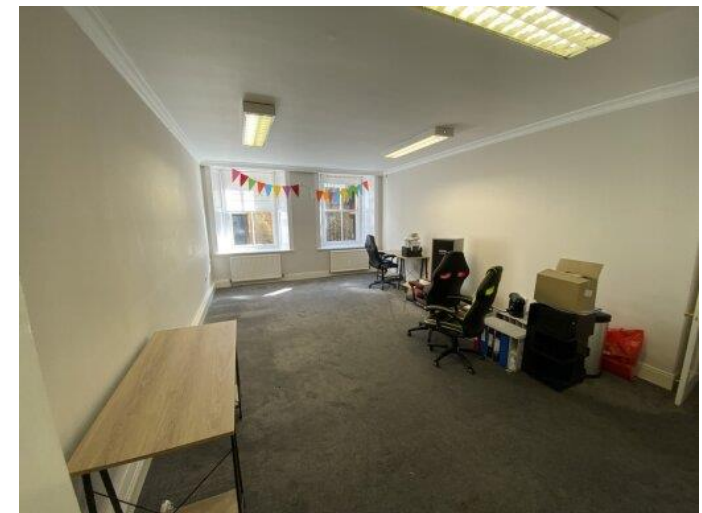
This property is not VAT elected.

### LEGAL COSTS

Each party to bear their own legal costs in the documentation of this transaction; however, the in-going tenant will be responsible for any LBTT, Registration Dues and any VAT incurred thereon.

### EPC

Released on application.



For further information or viewing arrangements please contact the sole agents:

Shepherd Chartered Surveyors 12 Atholl Crescent, Edinburgh, EH3 8HA. Tel: 0131 225 1234

Emily Anderson [emily.anderson@shepherd.co.uk](mailto:emily.anderson@shepherd.co.uk) & Hannah Barnett [hannah.barnett@shepherd.co.uk](mailto:hannah.barnett@shepherd.co.uk)

[www.shepherd.co.uk](http://www.shepherd.co.uk)

